

Michael Dandurand, P.E.
637 East Willow Street
Gardner, Kansas 66030
www.RoyalInspectionsKC.com



Foundation Certifications
FHA / HUD Certifications
Engineering Consultations
Licensed in Missouri & Kansas

DRYWALL CRACK REPAIR

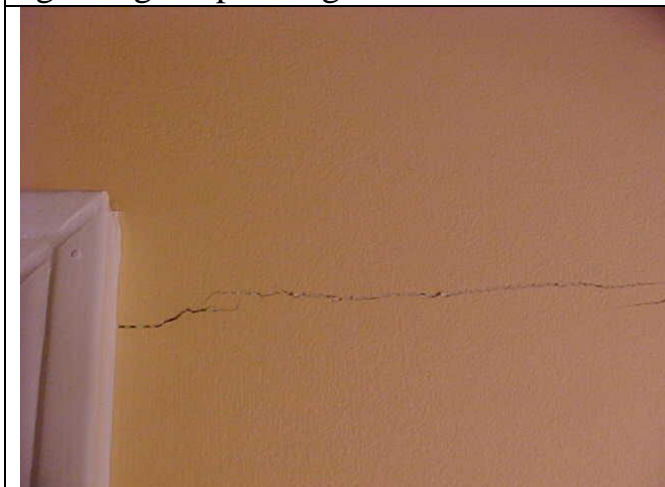
Drywall cracks occur throughout all homes regardless of age. Several factors can cause cracks to occur; temperature changes, humidity changes, strong winds and soil pressure are a few common ones. Many of the smaller drywall cracks can close back up when the weather or soil conditions return to the original state. Below is a recommendation for repair that will minimize future damage should the crack get larger or close.



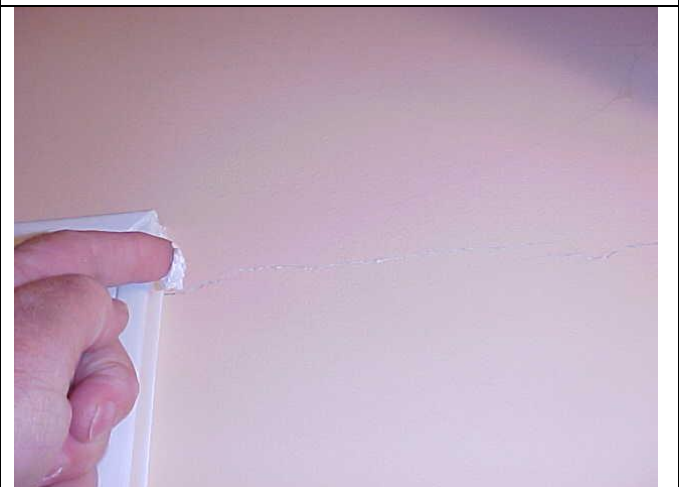
The recommended way to repair stress cracks in walls and ceilings is to use lightweight spackling.



There are various sizes but the smallest (8 oz.) jar is generally more than you will ever use.



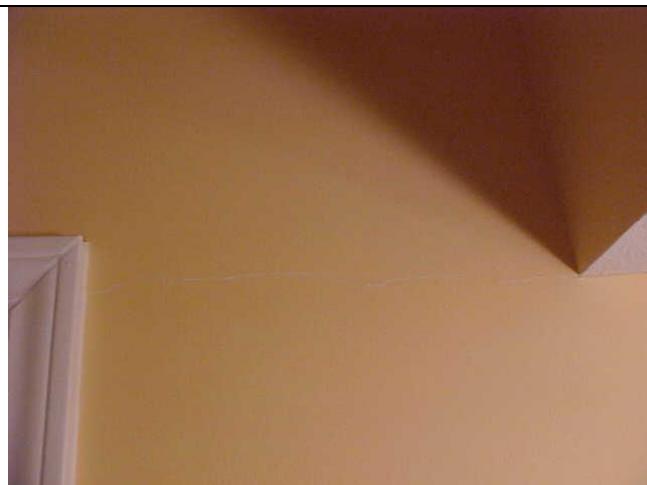
This crack is large enough to be noticed but also easily repaired with spackling.



Use your finger to spread some spackling into the crack. Cover 6-8 inches at a time.



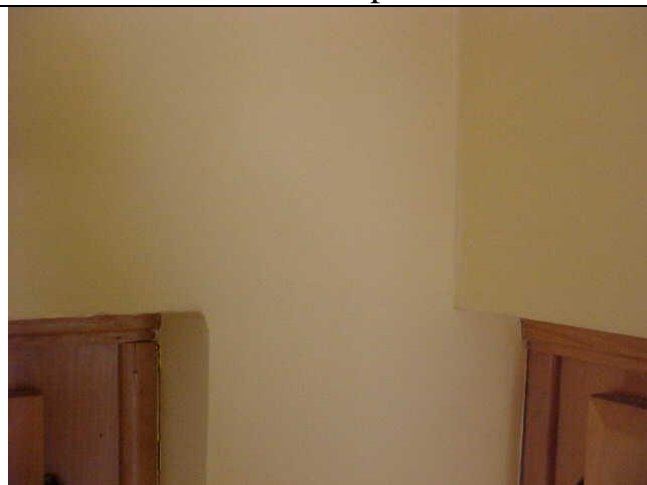
Use a damp rag to wipe off excess spackling; try not to remove any from inside the crack, a smooth finish is best.



You can paint the area when finished, however smaller cracks may be less noticeable if not painted.
This crack has not been painted.



Some larger cracks may take 2 or more applications of spackling; make sure to wipe off the excess with a damp cloth and let the spackling dry between applications.



This crack was painted after patching and it is not easily noticed. Visibility depends on matching paint properly and blending if necessary.

Many people try to use caulk or sheetrock mud to cover the crack leaving too much on the surface. This method of repair often looks worse than the crack itself. If it is a crack that fluctuates with weather, the lightweight spackling will crumble out and can be replaced, however the drywall mud may make the problem worse because it is more rigid and can cause the crack to become larger.