
Michael Dandurand, P.E.
637 East Willow Street
Gardner, Kansas 66030
www.RoyalInspectionsKC.com

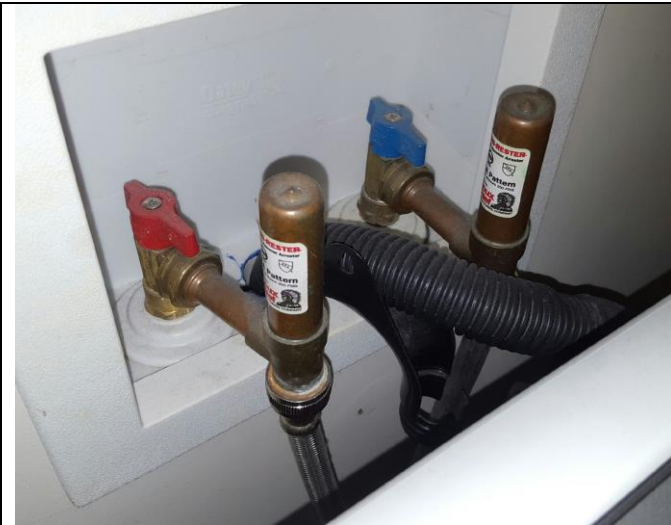


Foundation Certifications
FHA / HUD Certifications
Engineering Consultations
Licensed in Missouri & Kansas

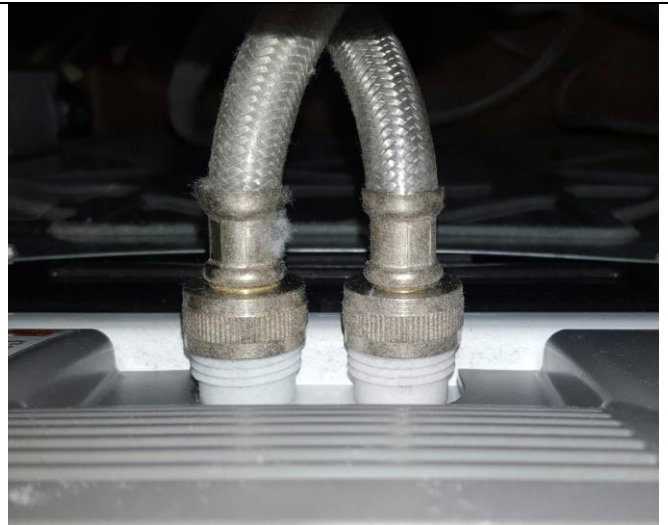
WASHER HOSES



We recommend the use of braided stainless steel washer hoses. Think of it as cheap insurance for your home. Many of us are not home during the day, but the washer hoses are under constant pressure as long as they are installed and the faucets are turned on (even if the washer is not running).



This shows the washer hose connection to the faucets.



This shows the washer hose connection to the washing machine.



This photo shows a rubber washer hose that has expanded and is about to fail.



I have observed one washer hose with multiple 'blisters'.

Imagine if one of these blisters pops open when you are home and water begins to spray everywhere. This may not be a big issue in an unfinished basement with a floor drain. Now imagine you are at work and one of the blisters pops in your second floor laundry room. You would have a full pressure water leak on the second floor of your home until you arrive home, identify the problem and shut the water off. This can cause thousands of dollars in damage to your home and belongings. The cost difference between the rubber washer hoses and the braided stainless washer hoses is about \$10.00 for the pair.